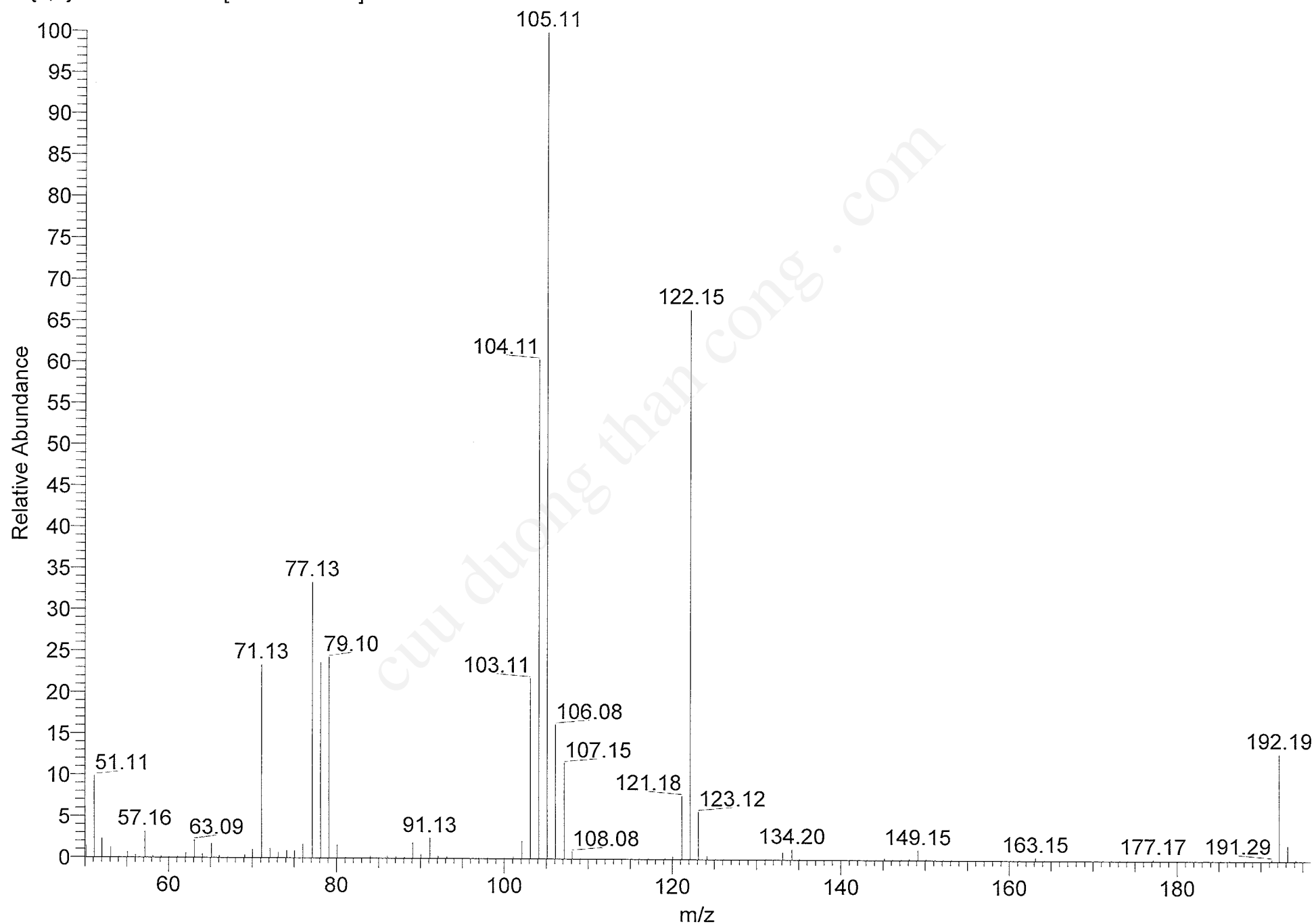


RKS_1 #2411-2630 RT: 10.70-11.44 AV: 220 NL: 4.19E8
T: {0,0} + c EI Full ms [50.00-600.00]

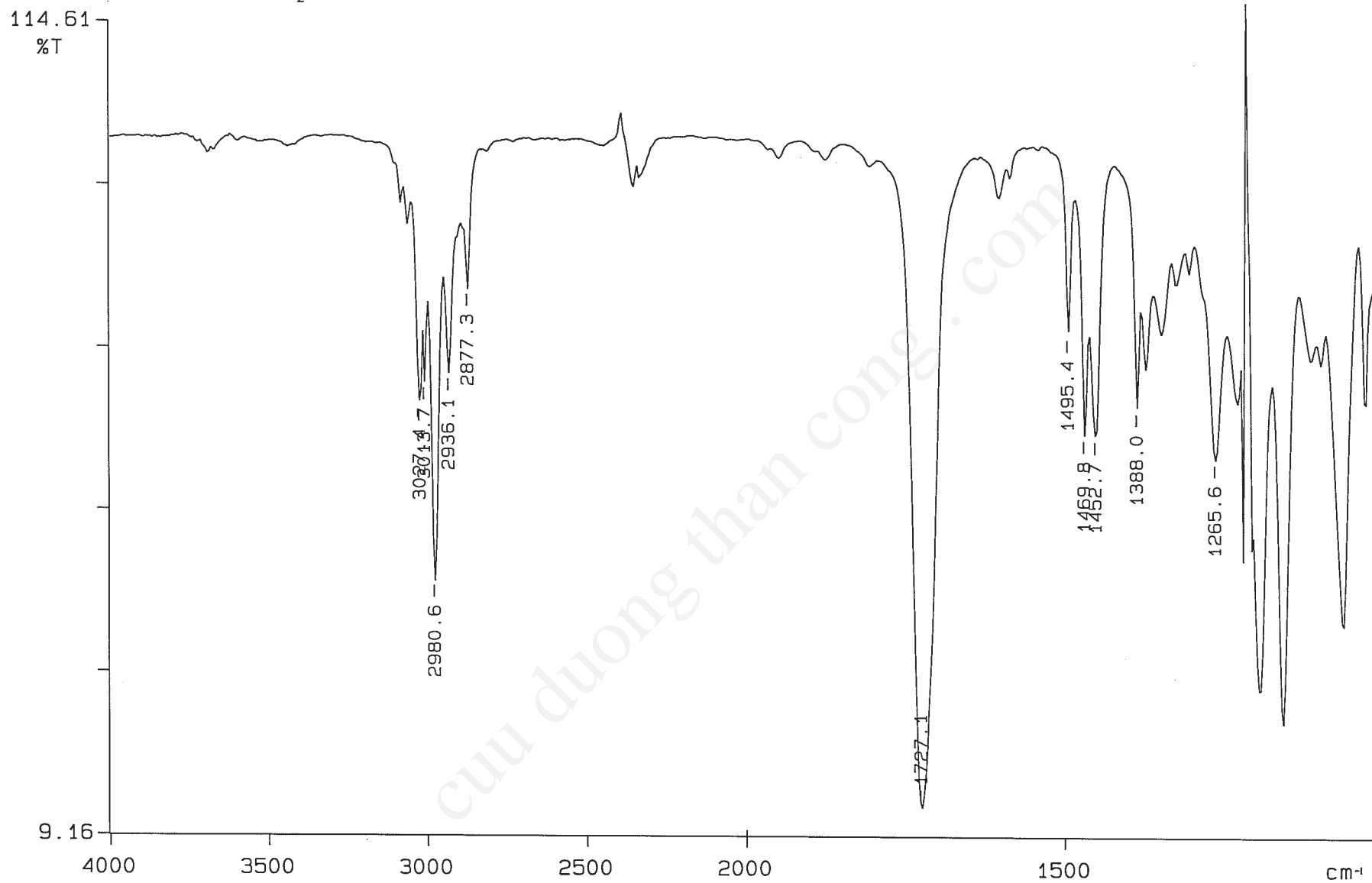


PERKIN ELMER

~~*~~ \

5% solution in CHCl_3

CaF_2 cell

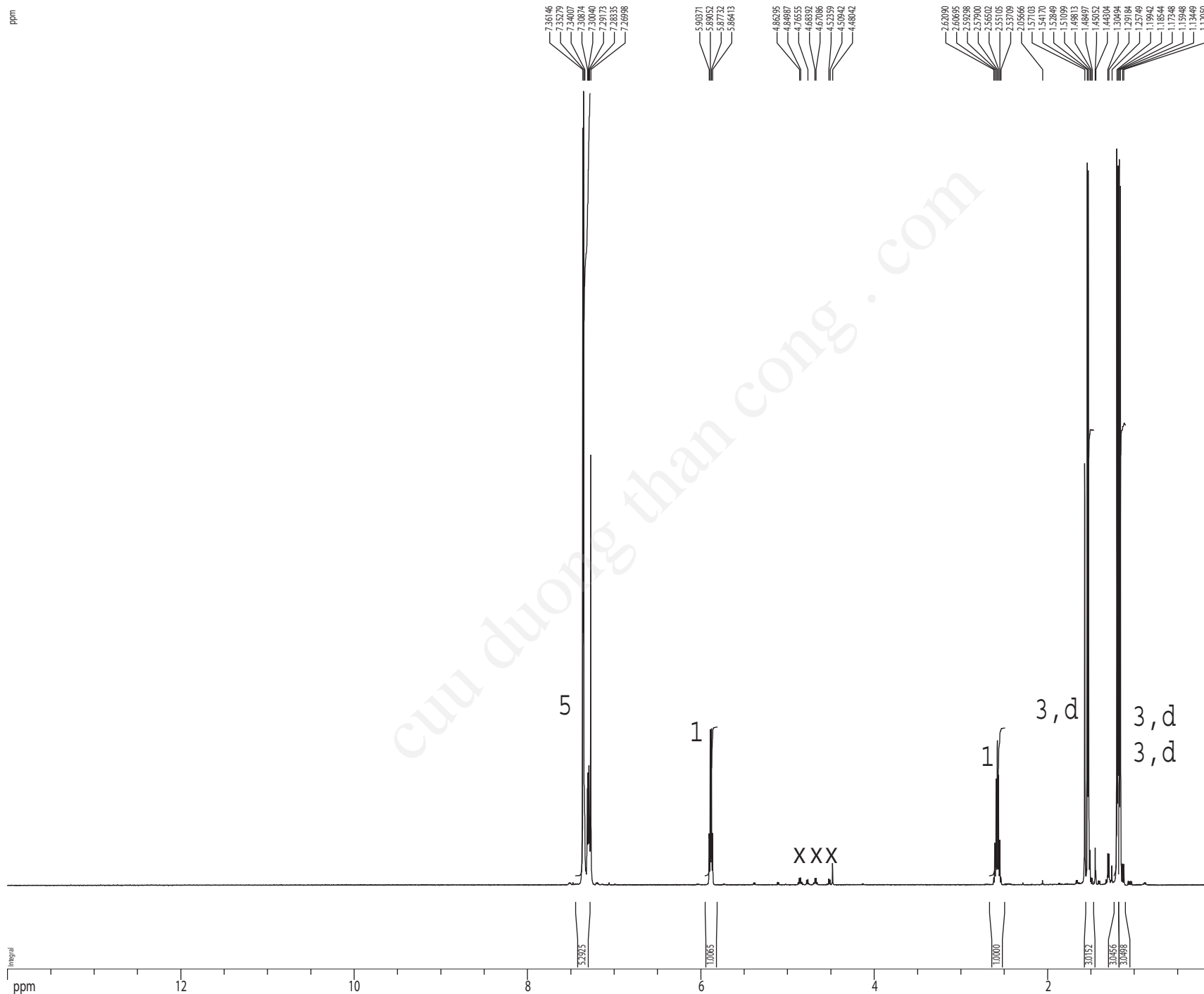


12/10/31 13: 06

X: 4 scans, 4.0 cm^{-1}

500 MHz ¹H NMR Spectrum in CDCl₃

ppm



Current Data Parameters
 USER nmr12t
 NAME Mid_1_500_CDCL3
 EXPNO 1
 PROCNO 1

F2 - Acquisition Parameters
 Date_ 20121101
 Time 9.53
 INSTRUM cryo500
 PROBHD 5 mm CPTCI 1H-
 PULPROG zg30
 TD 81728
 SOLVENT CDCl3
 NS 32
 DS 2
 SWH 8012.820 Hz
 FIDRES 0.098043 Hz
 AQ 5.0998774 sec
 RG 9
 DW 62.400 usec
 DE 6.00 usec
 TE 298.0 K
 D1 0.10000000 sec
 MCREST 0.00000000 sec
 MCWRK 0.01500000 sec

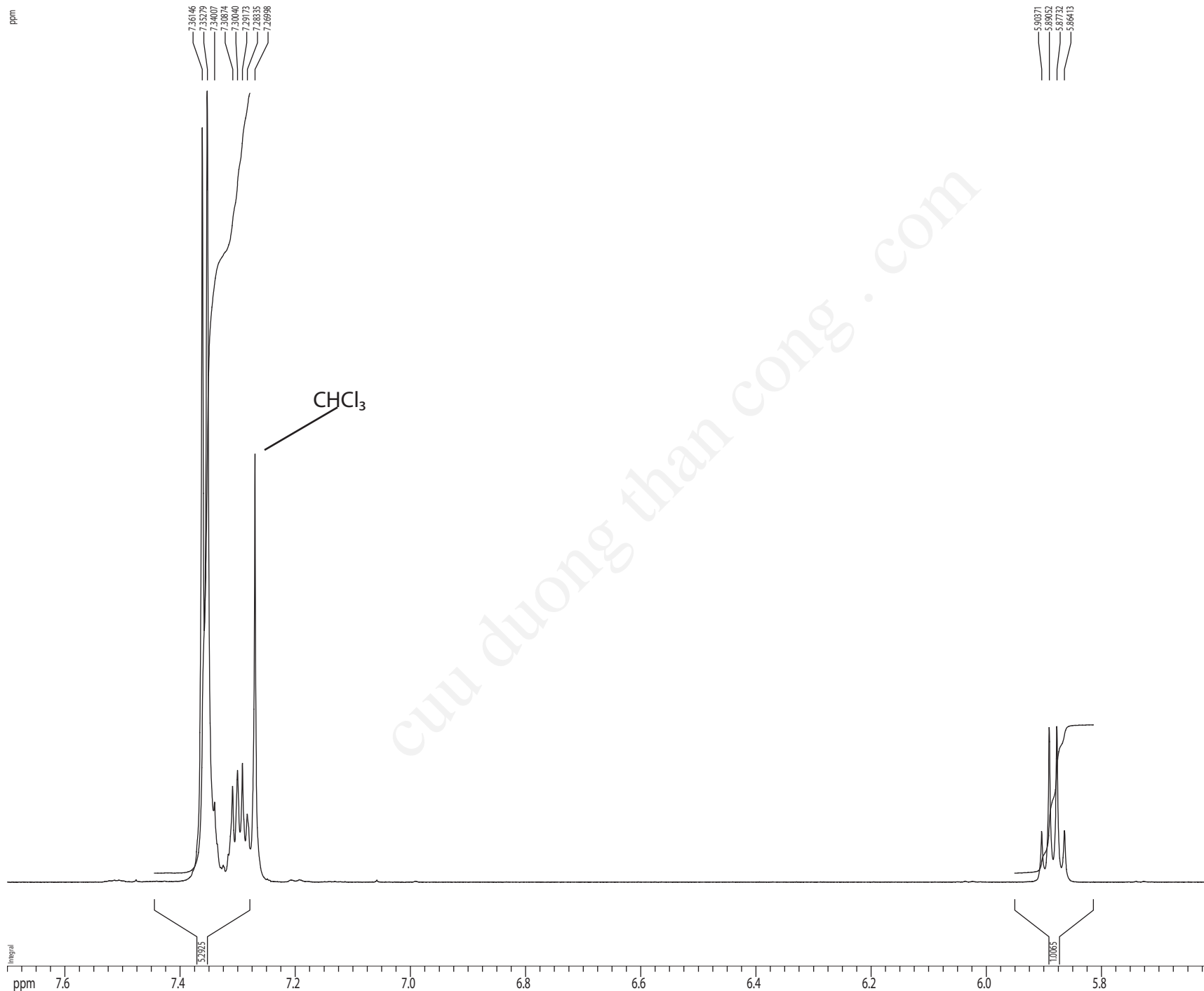
===== CHANNEL f1 =====
 NUC1 1H
 P1 7.50 usec
 PL1 1.60 dB
 SFO1 500.2235015 MHz

F2 - Processing parameters
 SI 65536
 SF 500.2200257 MHz
 WDW no
 SSB 0
 LB 0.00 Hz
 GB 0
 PC 2.50

1D NMR plot parameters
 CX 22.80 cm
 CY 15.00 cm
 F1P 14.000 ppm
 F1 7003.08 Hz
 F2P 0.000 ppm
 F2 0.00 Hz
 PPMCM 0.61404 ppm/cm
 HZCM 307.15265 Hz/cm

¹H spectrum

ppm



Current Data Parameters
USER nmr12t
NAME Mid_1_500_CDCL3
EXPNO 1
PROCNO 1

F2 - Acquisition Parameters
Date_ 20121101
Time 9.53
INSTRUM cryo500
PROBHD 5 mm CPTCI 1H-
PULPROG zg30
TD 81728
SOLVENT CDCL3
NS 32
DS 2
SWH 8012.820 Hz
FIDRES 0.098043 Hz
AQ 5.0998774 sec
RG 9
DW 62.400 usec
DE 6.00 usec
TE 298.0 K
D1 0.10000000 sec
MCREST 0.00000000 sec
MCWRK 0.01500000 sec

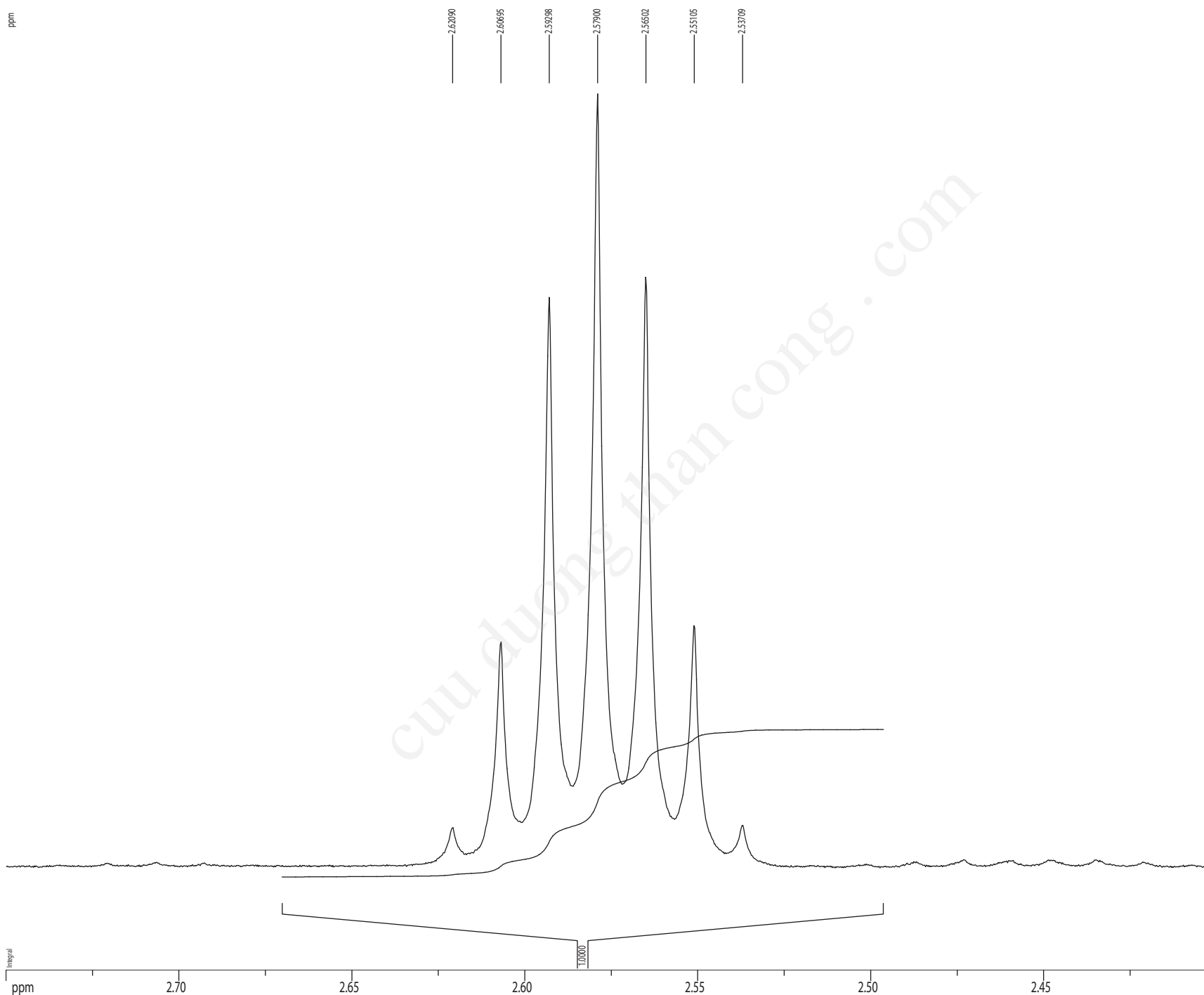
===== CHANNEL f1 =====
NUC1 1H
P1 7.50 usec
PL1 1.60 dB
SFO1 500.2235015 MHz

F2 - Processing parameters
SI 65536
SF 500.2200257 MHz
WDW no
SSB 0
LB 0.00 Hz
GB 0
PC 2.50

1D NMR plot parameters
CX 22.80 cm
CY 15.00 cm
FIP 7.700 ppm
F1 3851.69 Hz
F2P 5.600 ppm
F2 2801.23 Hz
PPMCM 0.09211 ppm/cm
HZCM 46.07290 Hz/cm

¹H spectrum

ppm



Current Data Parameters
 USER nmr12t
 NAME Mid_1_500_CDCL3
 EXPNO 1
 PROCNO 1

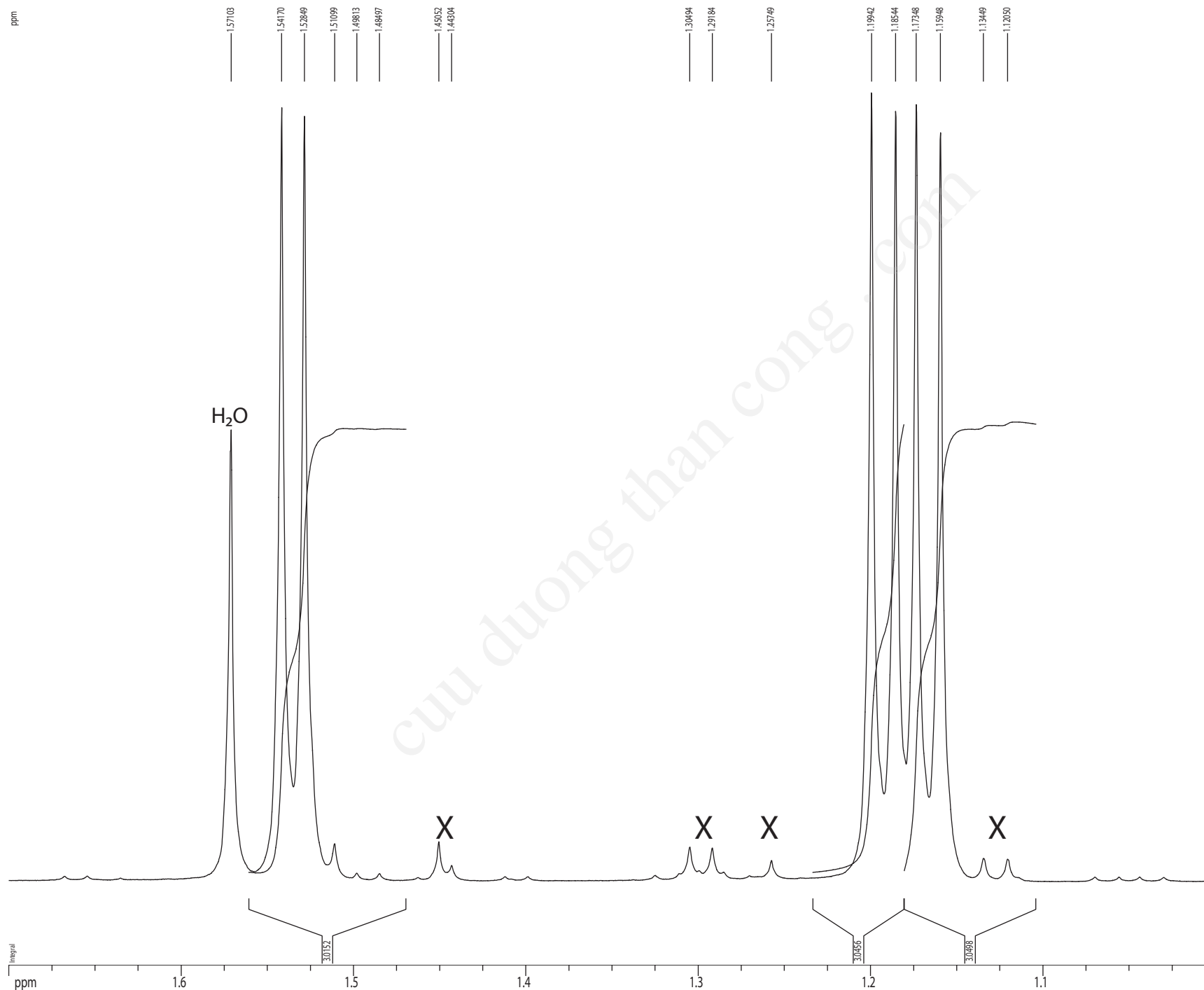
F2 - Acquisition Parameters
 Date_ 20121101
 Time 9.53
 INSTRUM cryo500
 PROBH0 5 mm CPTCI 1H-
 PULPROG zg30
 TD 81728
 SOLVENT CDCL3
 NS 32
 DS 2
 SWH 8012.820 Hz
 FIDRES 0.098043 Hz
 AQ 5.0998774 sec
 RG 9
 DW 62.400 usec
 DE 6.00 usec
 TE 298.0 K
 D1 0.10000000 sec
 MCREST 0.00000000 sec
 MCWRK 0.01500000 sec

===== CHANNEL f1 =====
 NUC1 1H
 P1 7.50 usec
 PL1 1.60 dB
 SFO1 500.2235015 MHz

F2 - Processing parameters
 SI 65536
 SF 500.2200257 MHz
 WDW no
 SSB 0
 LB 0.00 Hz
 GB 0
 PC 2.50

1D NMR plot parameters
 CX 22.80 cm
 CY 15.00 cm
 F1P 2.750 ppm
 F1 1375.60 Hz
 F2P 2.400 ppm
 F2 1200.53 Hz
 PPMCM 0.01535 ppm/cm
 HZCM 7.67881 Hz/cm

¹H spectrum



Current Data Parameters
 USER nmr12t
 NAME Mid_1_500_CDCL3
 EXPNO 1
 PROCNO 1

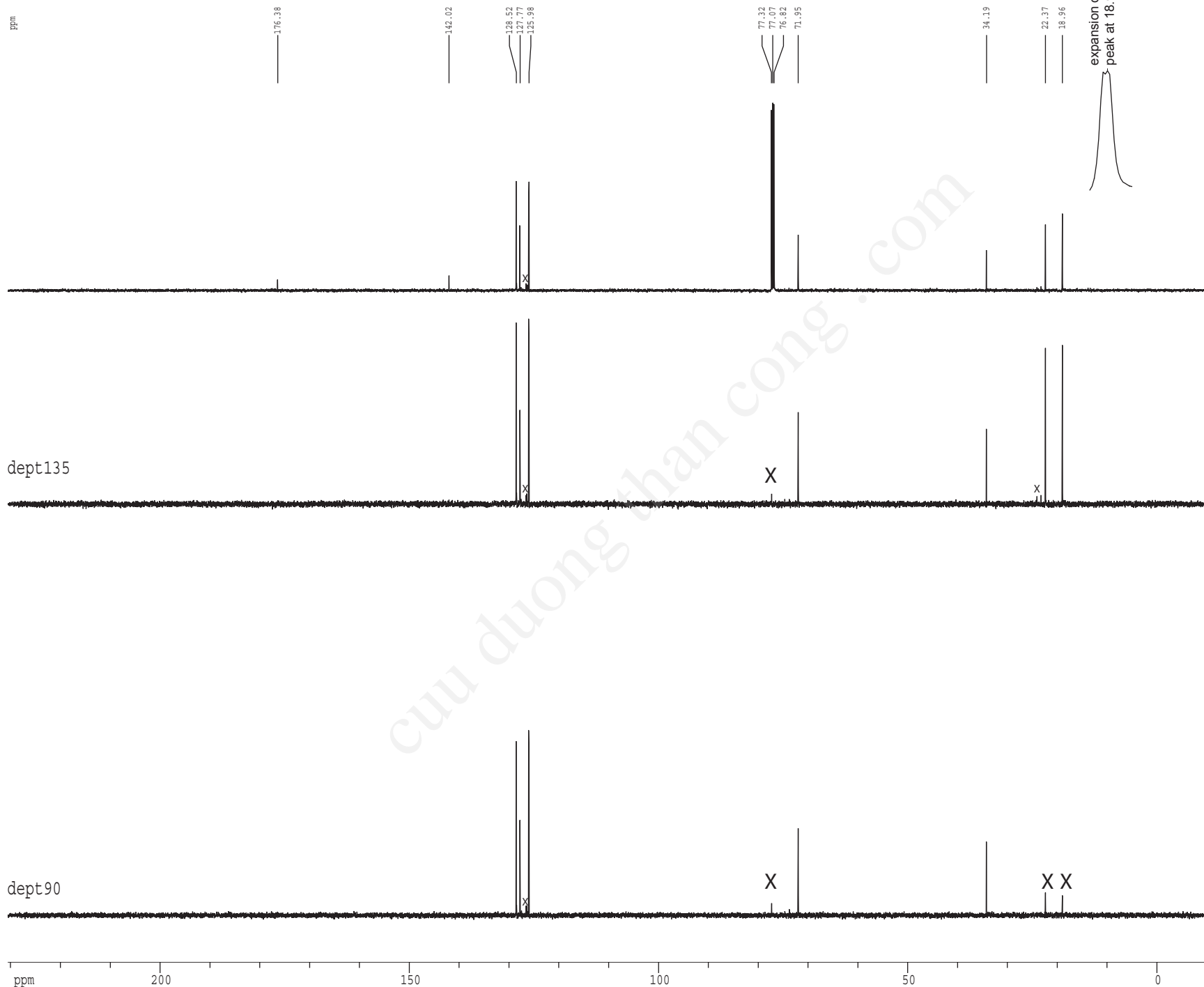
F2 - Acquisition Parameters
 Date_ 20121101
 Time 9.53
 INSTRUM cryo500
 PROBHD 5 mm CPTCI 1H-
 PULPROG zg30
 TD 81728
 SOLVENT CDCL3
 NS 32
 DS 2
 SWH 8012.820 Hz
 FIDRES 0.098043 Hz
 AQ 5.0998774 sec
 RG 9
 DW 62.400 usec
 DE 6.00 usec
 TE 298.0 K
 D1 0.10000000 sec
 MCREST 0.00000000 sec
 MCWRK 0.01500000 sec

===== CHANNEL f1 =====
 NUC1 1H
 P1 7.50 usec
 PL1 1.60 dB
 SFO1 500.2235015 MHz

F2 - Processing parameters
 SI 65536
 SF 500.2200257 MHz
 WDW no
 SSB 0
 LB 0.00 Hz
 GB 0
 PC 2.50

1D NMR plot parameters
 CX 22.80 cm
 CY 15.00 cm
 FIP 1.700 ppm
 F1 850.37 Hz
 F2P 1.000 ppm
 F2 500.22 Hz
 PPMCM 0.03070 ppm/cm
 HZCM 15.35763 Hz/cm

125.8 MHz ¹³C NMR spectrum with ¹H decoupling in CDCl₃



Current Data Parameters
 USER nmr12t
 NAME Mid_1_500_CDCL3
 EXPNO 2
 PROCNO 1

F2 - Acquisition Parameters
 Date_ 20121101
 Time_ 10.02
 INSTRUM cryo500
 PROBHD 5 mm CPTCI 1H-
 PULPROG SpinEchopg30gp.prd
 TD 65536
 SOLVENT CDCL3
 NS 500
 DS 16
 SWH 30303.031 Hz
 FIDRES 0.462388 Hz
 AQ 1.0813940 sec
 RG 4096
 DW 16.500 usec
 DE 6.00 usec
 TE 298.0 K
 D1 0.25000000 sec
 d11 0.03000000 sec
 D16 0.00020000 sec
 d17 0.00019600 sec
 MCREST 0.00000000 sec
 MCNEX 0.01500000 sec
 P2 31.00 usec

===== CHANNEL f1 =====
 NUC1 ¹³C
 P1 15.50 usec
 P11 500.00 usec
 P12 2000.00 usec
 PL0 120.00 dB
 PL1 -1.00 dB
 SFO1 125.7942548 MHz
 SF1 3.20 dB
 SF2 3.20 dB
 SPNAM1 Crp60,0.5,20.1
 SPNAM2 Crp60comp,4
 SPOFF1 0.00 Hz
 SPOFF2 0.00 Hz

===== CHANNEL f2 =====
 CPDPRG2 waltz16
 NUC2 ¹H
 PCPD2 100.00 usec
 PL2 1.60 dB
 PL12 24.60 dB
 SFO2 500.2225011 MHz

===== GRADIENT CHANNEL =====
 GPNAM1 SINE.100
 GPNAM2 SINE.100
 GFX1 0.00 %
 GFX2 0.00 %
 GPT1 0.00 %
 GPT2 0.00 %
 GPZ1 30.00 %
 GPZ2 50.00 %
 p15 500.00 usec
 p16 1000.00 usec

F2 - Processing parameters
 SI 65536
 SF 125.7804190 MHz
 WDW EM
 SSB 0
 LB 1.00 Hz
 GB 0
 PC 4.00

1D NMR plot parameters
 CX 22.80 cm
 CY 3.56 cm
 F1P 230.637 ppm
 F1 29009.68 Hz
 F2P -10.287 ppm
 F2 -1293.96 Hz
 PPMCM 10.56688 ppm/cm
 HZCM 1329.10706 Hz/cm