



HỆ ĐIỀU HÀNH LINUX CĂN BẢN

Lê Ngọc Sơn

Inson@fit.hcms.edu.vn

NỘI DUNG

- ❑ Chuẩn bị.
- ❑ Quá trình cài đặt.
- ❑ Giới thiệu một số tiện ích

cuu duong than cong. com

cuu duong than cong. com



CHUẨN BỊ

Trước khi cài đặt cần chuẩn bị những phần sau:

- Chuột.
- Ổ đĩa cứng.
- Màn hình.
- Card mạng (nếu cài qua mạng).
- Chia partition ổ đĩa cứng.
- Mục tiêu cài đặt (cho server, cho workstation...)
- Phiên bản Linux (Fedora, Ubuntu, CentOS,...)



PHƯƠNG THỨC CÀI ĐẶT

- Linux có thể được cài đặt bởi nhiều nguồn:
 - Từ CD-ROM
 - Thông qua mạng (network)
- Có thể sử dụng chế độ đồ họa hay text để cài đặt



CÁC BƯỚC CÀI ĐẶT

- Thông thường, các phiên bản Linux sẽ cho lựa chọn cài đặt mới hoặc nâng cấp (upgrade).
- Các bước thông thường gồm có:
 - Chọn install hoặc update
 - Phân hoạch đĩa:
 - Chúng ta có thể tạo ra các phân vùng (partition) mới hoặc dùng lại các partition Linux sẵn có
 - Chọn phân vùng swap
 - Chọn kiểu file system sử dụng
 - Format các phân vùng
- Tùy chọn các thông số software, hardware



PHÂN VÙNG ĐĨA

- Phân vùng đĩa (disk partitioning) là công việc phân chia ổ đĩa cứng thành các vùng nhỏ khác nhau.
- Có ba loại phân vùng: primary, extended và logical
- Có thể có tối đa 4 primary partitions trên đĩa
- Các phân vùng extended được tạo ra để chứa logical partitions
- Phân vùng chứa /boot phải nằm trong khoảng 1024 cylinder đầu tiên đối với một số hệ máy cũ



SWAP SPACE

- Swap space là một partition trên ổ cứng.
- Linux sử dụng swap space làm bộ nhớ ảo (tương tự như pagefile trên windows)
- Cài đặt Linux không có swap space sẽ làm giảm rõ rệt hiệu năng của hệ thống
- Có thể phân chia nhiều swap space cho một hệ thống Linux
- Thông số được khuyên dùng: $\text{swap} = 2 * \text{RAM}$



CÁC PHÂN VÙNG CẦN THIẾT

- Phân vùng /boot : Chứa thành phần khởi động hệ thống Linux
- Phân vùng /swap:
- Phân vùng / (đọc là root): chứa toàn bộ hệ điều hành Linux.

cuu duong than cong. com



CÁC LOẠI FILE SYSTEM

- Linux hỗ trợ khá nhiều định dạng file system khác nhau:
 - Ext2fs: được hỗ trợ từ phiên bản kernel 2.2 trở lên, không support **journaling**
 - Ext3fs: mạnh mẽ hơn phiên bản ext2, hỗ trợ **journaling**
 - XFS: được phát triển bởi SGI cho dòng vi xử lý 64 bit, hỗ trợ file có kích thước 8129 petabytes (1 triệu tỉ byte)
 - JFS: phát triển bởi IBM, hỗ trợ journaling

QUI TẮT ĐẶT TÊN PARTITION

- Các thiết bị trên Linux được đặt tên theo thứ tự:

IDE devices are named

- /dev/hda, /dev/hdb, etc.

Logical partitions on /dev/hda

- /dev/hda1, /dev/hda2, etc.

SCSI devices are named

- /dev/sda, /dev/sdb, etc.

Logical partitions on /dev/sda

- /dev/sda1, /dev/sda2, etc.



BOOT LOADER

- Boot Loader là công cụ giúp lựa chọn phiên bản hệ điều hành nào được khởi động.
- Linux hỗ trợ khá nhiều boot loader khác nhau:
 - LILO
 - GRUB
 - Choose-OS
 - System Commander
 - SYSLINUX
- Hai phiên bản thông dụng nhất là LILO và GRUB

CÀI ĐẶT TỪ ĐĨA CD-ROM

FedoraTM
C O R E

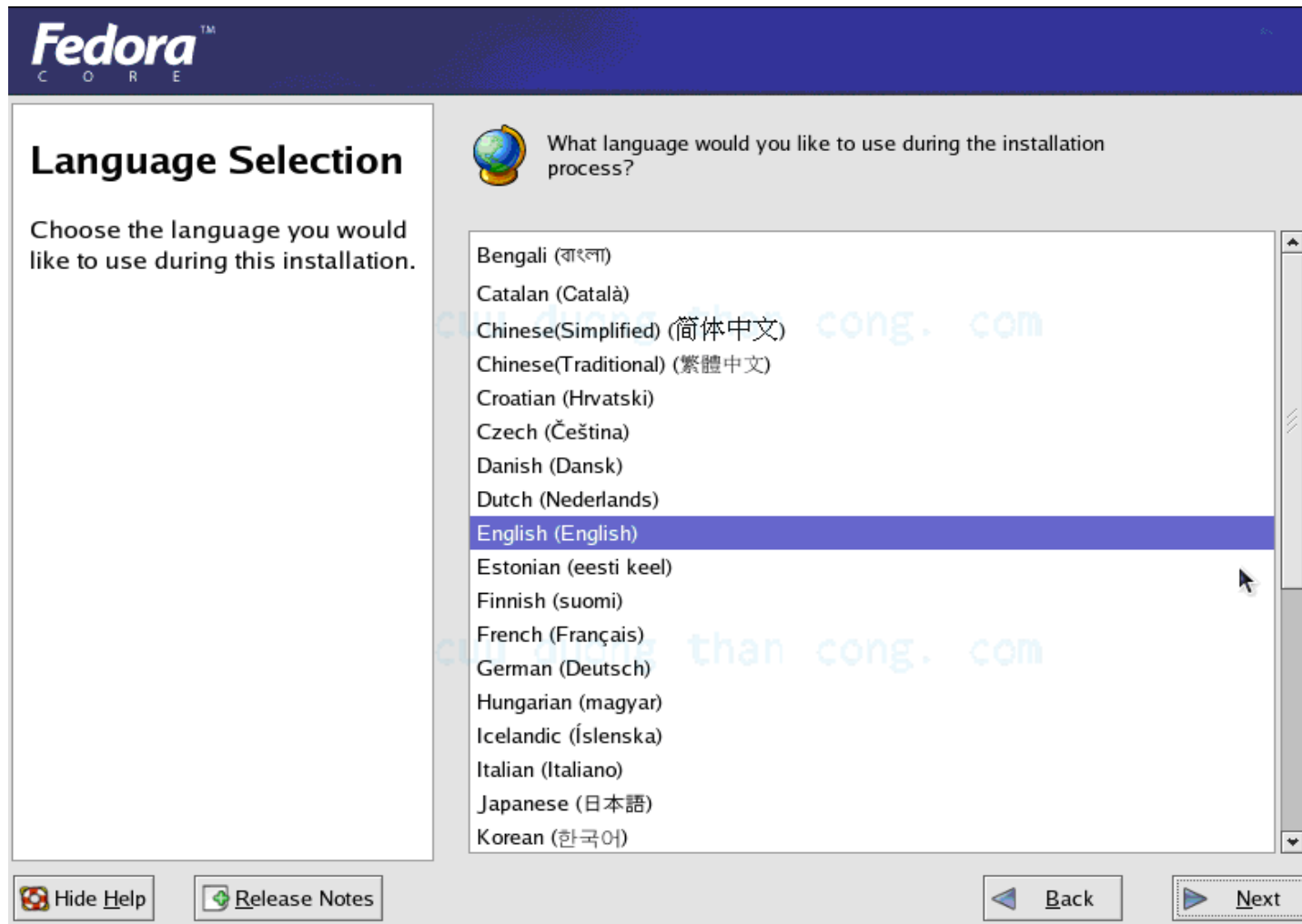
cuu duong than cong. com

- To install or upgrade in graphical mode, press the <ENTER> key.
- To install or upgrade in text mode, type: linux text <ENTER>.
- Use the function keys listed below for more information.

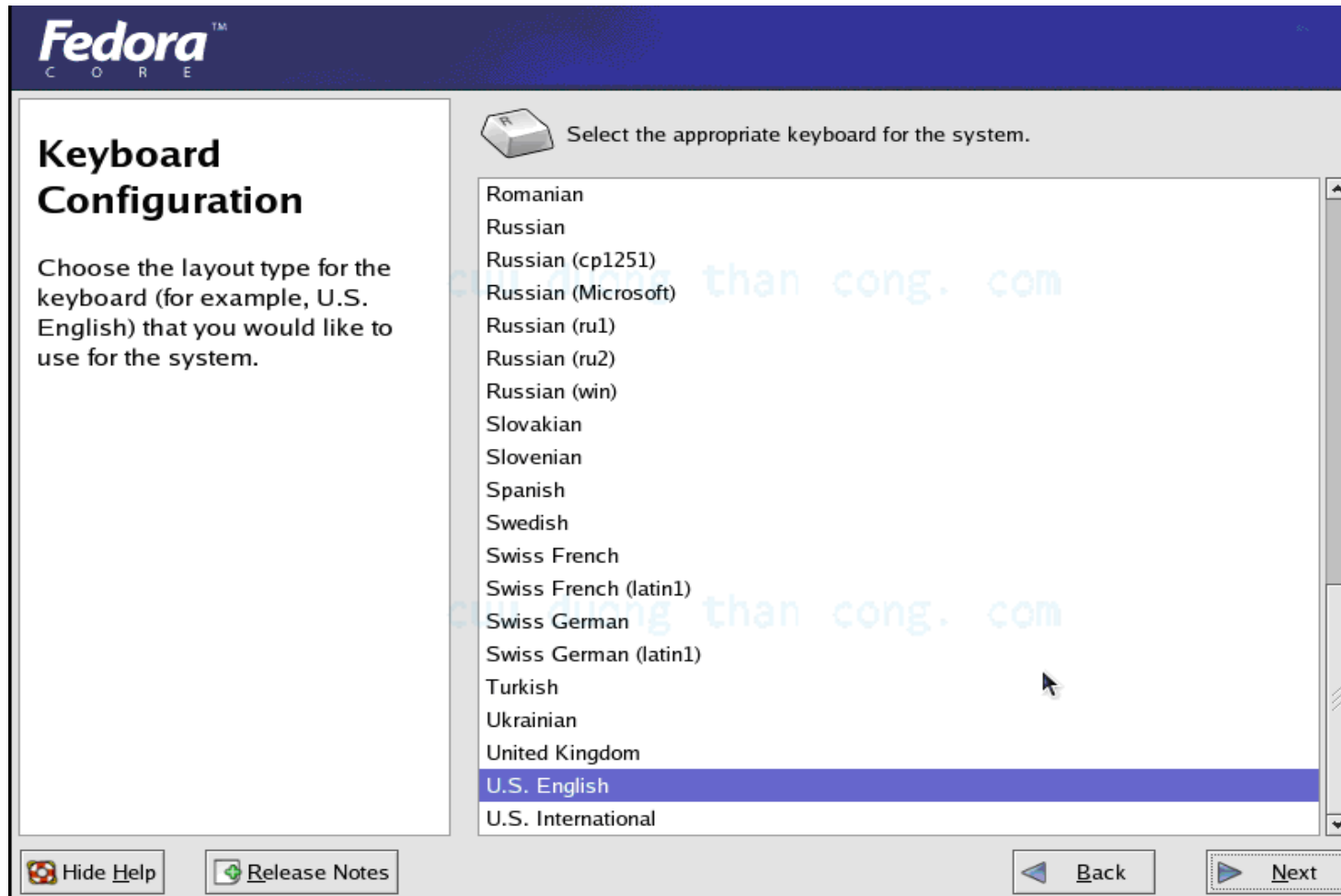
[F1-Main] [F2-Options] [F3-General] [F4-Kernel] [F5-Rescue]

boot: _

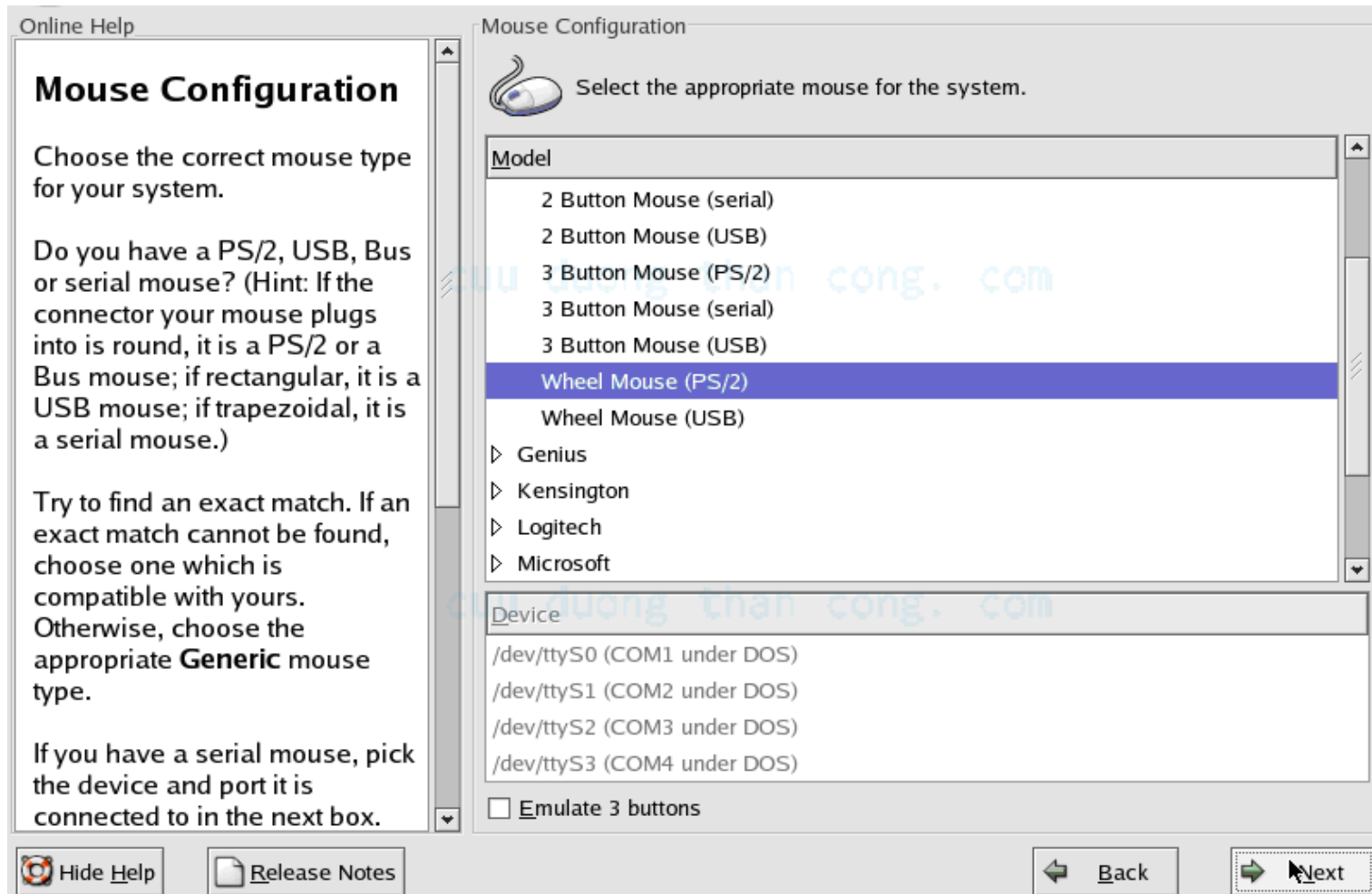
CÁC BƯỚC CÀI ĐẶT



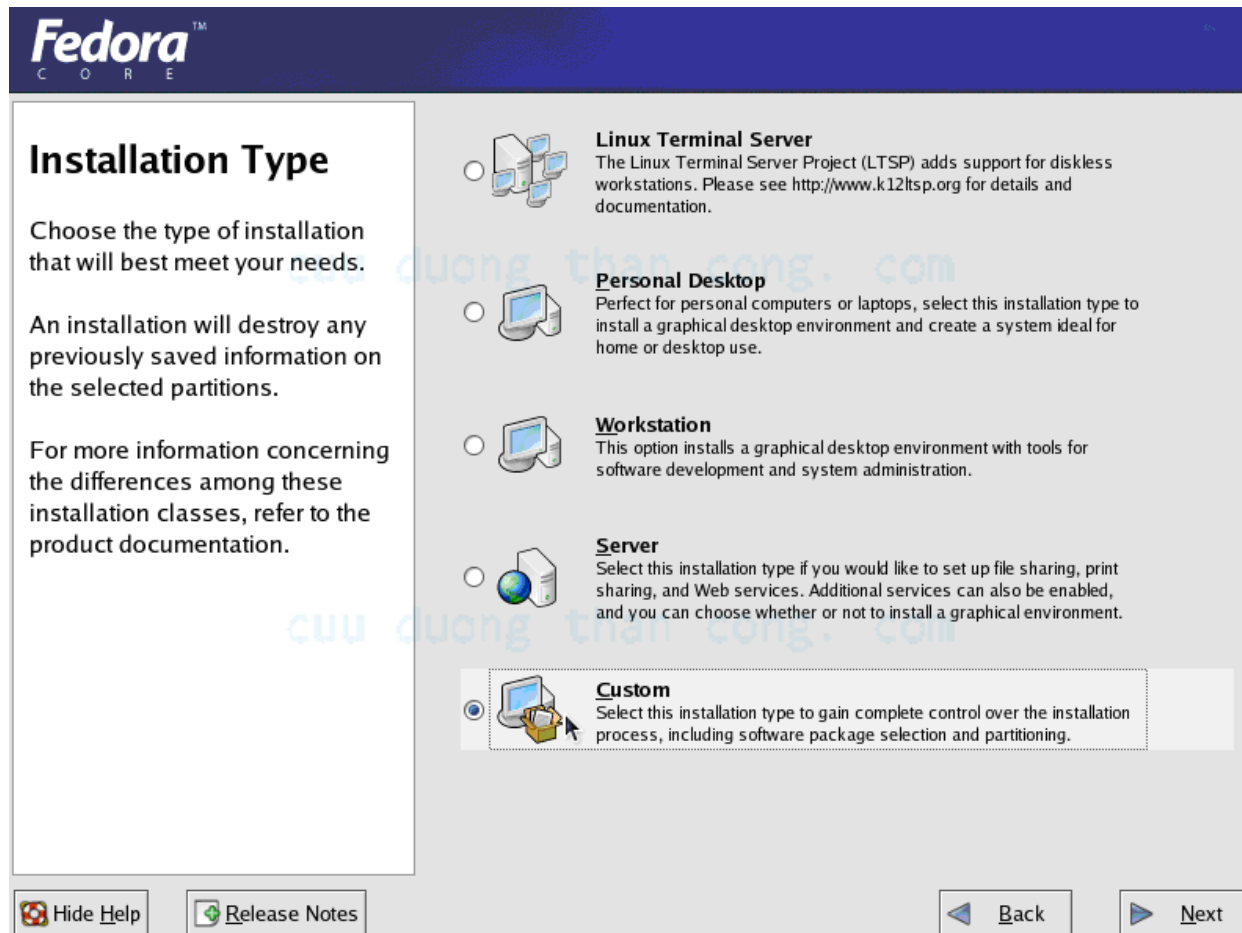
CÁC BƯỚC CÀI ĐẶT



CÁC BƯỚC CÀI ĐẶT



CÁC BƯỚC CÀI ĐẶT



Disk Partitioning Setup

One of the largest obstacles for a new user during a Linux installation is partitioning. This process is made easier by providing automatic partitioning.

By selecting automatic partitioning, you will not have to use partitioning tools to assign mount points, create partitions, or allocate space for your installation.

To partition manually, choose the **Disk Druid** partitioning tool.

Use the **Back** button to choose

Automatic Partitioning sets partitions based on the selected installation type. You also can customize the partitions once they have been created.

The manual disk partitioning tool, Disk Druid, allows you to create partitions in an interactive environment. You can set the file system types, mount points, partition sizes, and more.

- ☒ Automatically partition
- ☐ Manually partition with **Disk Druid**

CÁC BƯỚC CÀI ĐẶT

Fedora
C O R E

Automatic Partitioning

Automatic partitioning allows you to have some control concerning what data is removed (if any) from your system.

To remove only Linux partitions (partitions created from a previous Linux installation), select **Remove all Linux partitions on this system**.

To remove all partitions on your hard drive(s) (this includes partitions created by other operating systems such as Windows 95/98/NT/2000), select **Remove all partitions on this system**.

Before automatic partitioning can be set up by the installation program, you must choose how to use the space on your hard drives.


I want to have automatic partitioning:


- ☒ Remove all Linux partitions on this system
- ☐ Remove all partitions on this system
- ☐ Keep all partitions and use existing free space

Select the drive(s) to use for this installation:

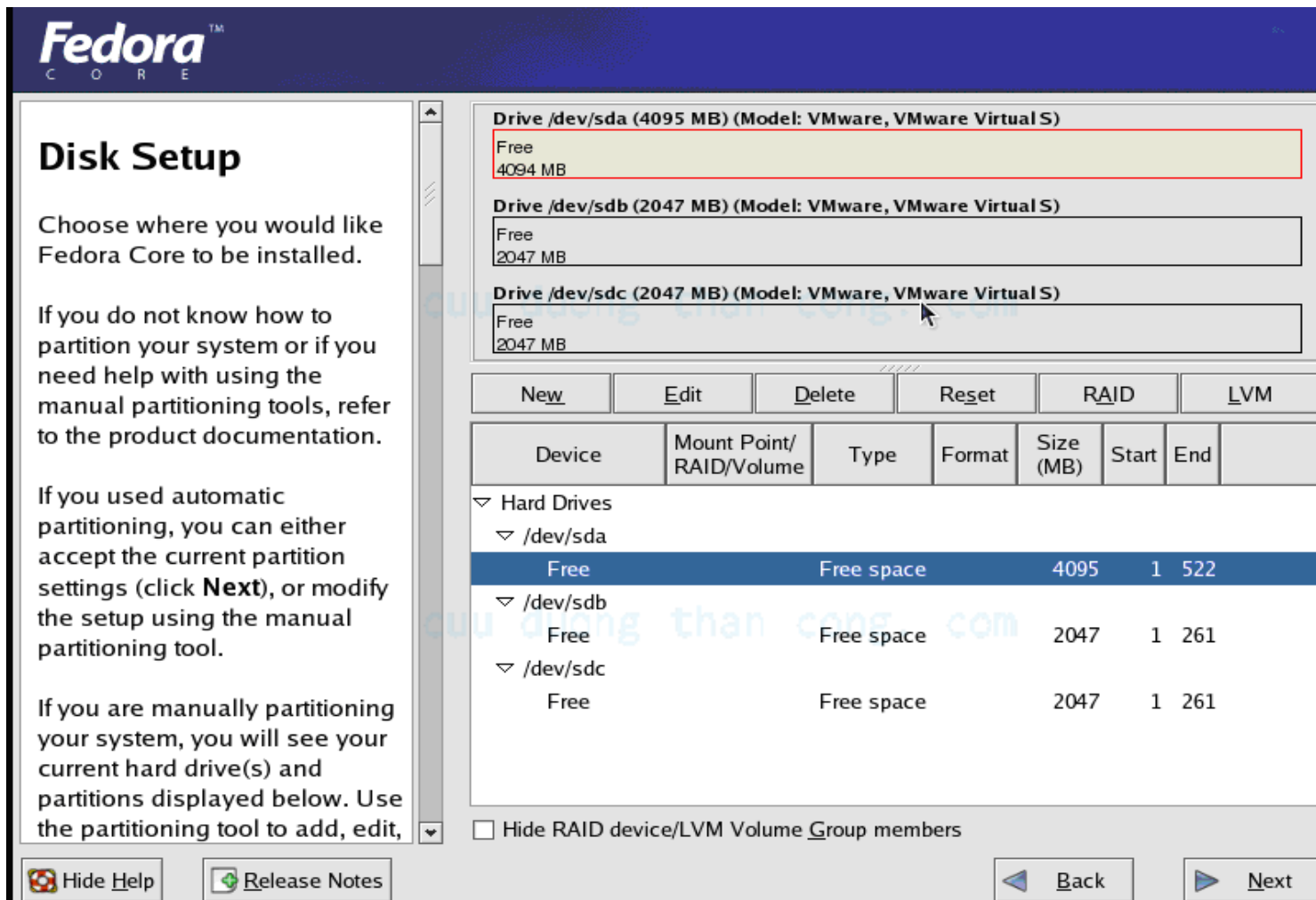
<input checked="" type="checkbox"/>	sda	4095 MB	VMware, VMware Virtual S
<input checked="" type="checkbox"/>	sdb	2047 MB	VMware, VMware Virtual S
<input checked="" type="checkbox"/>	sdc	2047 MB	VMware, VMware Virtual S

☒ Review (and modify if needed) the partitions created

 Back

 Next

CÁC BƯỚC CÀI ĐẶT



CÁC BƯỚC CÀI ĐẶT

Fedora
C O R E

Boot Loader Configuration

By default, the GRUB boot loader will be installed on the system. If you do not want to install GRUB as your boot loader, select **Change boot loader**.

You can also choose which OS (if you have more than one) should boot by default. Select **Default** beside the preferred boot partition to choose your default bootable OS. You will not be able to move forward in the installation unless you choose a default boot image.

You may add, edit, and delete the boot loader entries by

The GRUB boot loader will be installed on `/dev/sda`. [Change boot loader](#)

You can configure the boot loader to boot other operating systems. It will allow you to select an operating system to boot from the list. To add additional operating systems, which are not automatically detected, click 'Add.' To change the operating system booted by default, select 'Default' by the desired operating system.

Default	Label	Device
<input checked="" type="checkbox"/>	Fedora Core	/dev/sdb1

[Add](#)
[Edit](#)
[Delete](#)

A boot loader password prevents users from changing options passed to the kernel. For greater system security, it is recommended that you set a password.

☐ [Use a boot loader password](#) [Change password](#)

☐ Configure advanced boot loader options

[Back](#) [Next](#)

CÁC BƯỚC CÀI ĐẶT

Fedora
C O R E

Network Configuration

Any network devices you have on the system will be automatically detected by the installation program and shown in the **Network Devices** list.

To configure the network device, first select the device and then click **Edit**. In the **Edit Interface** screen, you can choose to have the IP and Netmask information configured by DHCP or you can enter it manually. You can also choose to make the device active at boot time.

If you do not have DHCP client access or are unsure as to

Network Devices

Active on Boot	Device	IP/Netmask
<input checked="" type="checkbox"/>	eth0	172.29.14.150/255.255.255.224

[Edit](#)

Hostname

Set the hostname:

☐ automatically via DHCP

☒ manually (ex. "host.domain.com")

Miscellaneous Settings

Gateway:	<input type="text" value="172"/>	<input type="text" value="29"/>	<input type="text" value="14"/>	<input type="text" value="129"/>
Primary DNS:	<input type="text" value="172"/>	<input type="text" value="29"/>	<input type="text" value="14"/>	<input type="text" value="150"/>
Secondary DNS:	<input type="text"/>	<input type="text"/>	<input type="text"/>	<input type="text"/>
Tertiary DNS:	<input type="text"/>	<input type="text"/>	<input type="text"/>	<input type="text"/>

[Hide Help](#) [Release Notes](#) [Back](#) [Next](#)

CÁC BƯỚC CÀI ĐẶT

Fedora
C O R E

Firewall Configuration

A firewall sits between your computer and the network, and determines which resources on your computer remote users on the network are able to access. A properly configured firewall can greatly increase the out-of-the-box security of your system.

Choose the appropriate security level for your system.

No Firewall — No firewall provides complete access to your system and does no security checking. Security checking is the disabling of access to certain services. This should only be selected if you

A firewall can help prevent unauthorized access to your computer from the outside world. Would you like to enable a firewall?

☐ No firewall

☒ Enable firewall

What services should be allowed to pass through the firewall?

☐ WWW (HTTP)

☐ FTP

☐ SSH

☐ Telnet

☐ Mail (SMTP)

Other ports:

If you would like to allow all traffic from a device, select it below.

☐ eth0


Hide Help

Release Notes

Back


Next

CÁC BƯỚC CÀI ĐẶT

Fedora™
C O R E

Set Root Password

Use the root account *only* for administration. Once the installation has been completed, create a non-root account for your general use and `su -` to gain root access when you need to fix something quickly. These basic rules will minimize the chances of a typo or incorrect command doing damage to your system.





Enter the root (administrator) password for the system.


Root Password:


Confirm:

Reading package information...

 Hide Help

 Release Notes


 Back


 Next


Package Group Selection

Select the package (application) groups that you want to install. To select a package group, click on the check box beside it.

Once a package group has been selected, click on **Details** to view which packages will be installed by default and to add or remove optional packages from that group.




-  This group is a collection of graphical administration tools for the system, such as for managing user accounts and configuring system hardware.

☒ **System Tools** [22/22] [Details](#)
-  This group is a collection of various tools for the system, such as the client for connecting to SMB shares and tools to monitor network traffic.


☒ **Printing Support** [9/10] [Details](#)
-  Install these tools to enable the system to print or act as a print server.


☐ **Printing Support** [9/10] [Details](#)


Miscellaneous


- ☒ **LTSP** [31/31] [Details](#)
 The Linux Terminal Service Project
- ☐ **Everything**
 This group includes all the packages available. Note that there are substantially more packages than just the ones in all the other package groups on this page.
- ☐ **Minimal**
 Choose this group to get the minimal possible set of packages. Useful for creating small router/firewall boxes, for example.

Total install size: 3,881M

 Hide Help

 Release Notes

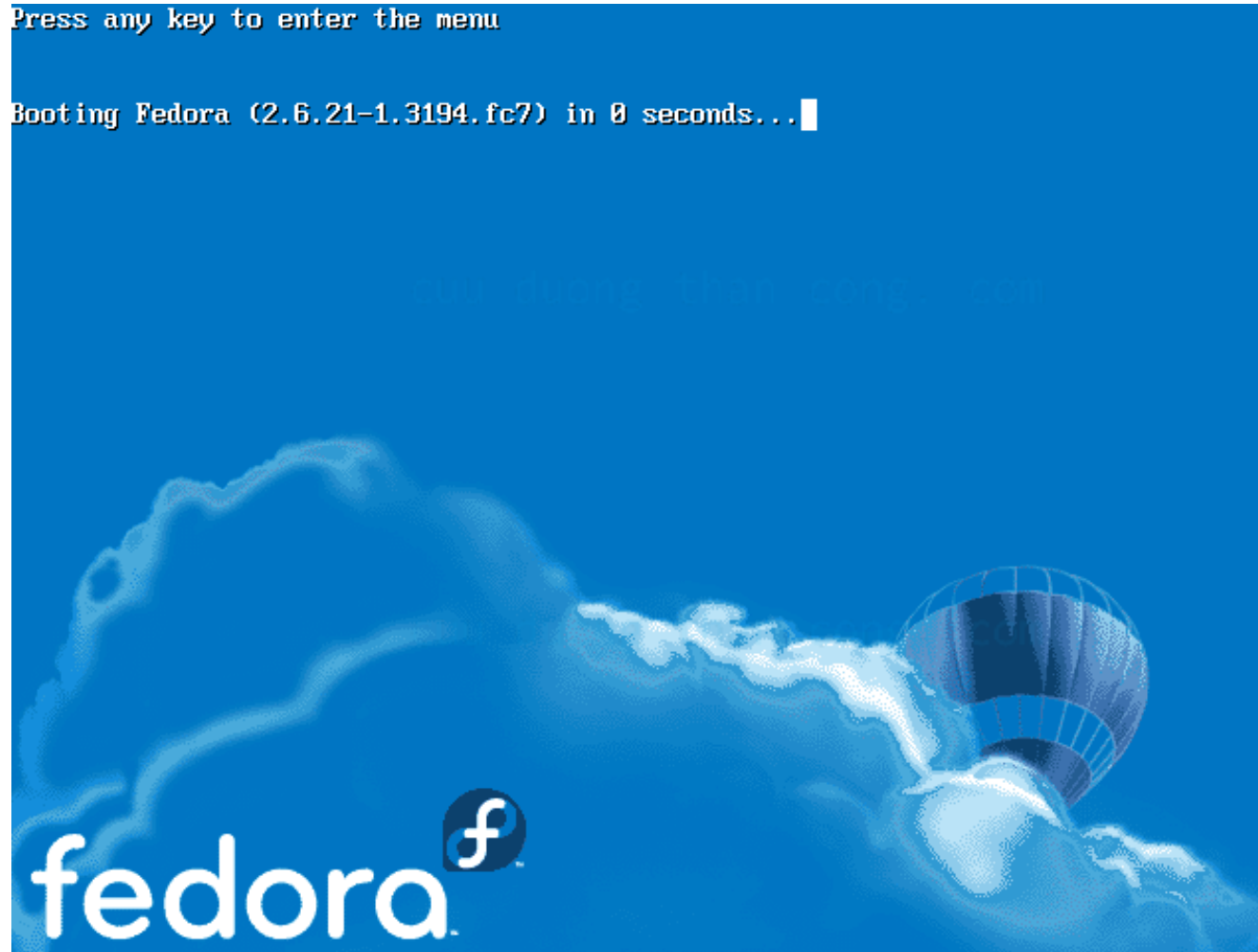
 Back

 Next

MÀN HÌNH KHỞI ĐỘNG FEDORA

Press any key to enter the menu

Booting Fedora (2.6.21-1.3194.fc7) in 0 seconds... █



GIỚI THIỆU MỘT SỐ TIỆN ÍCH

- Open Office
- Web Browser
- Các giao diện setting
- Các IDE lập trình

[Cuu duong than cong. com](http://CuuDuongThanCong.com)

[Cuu duong than cong. com](http://CuuDuongThanCong.com)



OPEN OFFICE

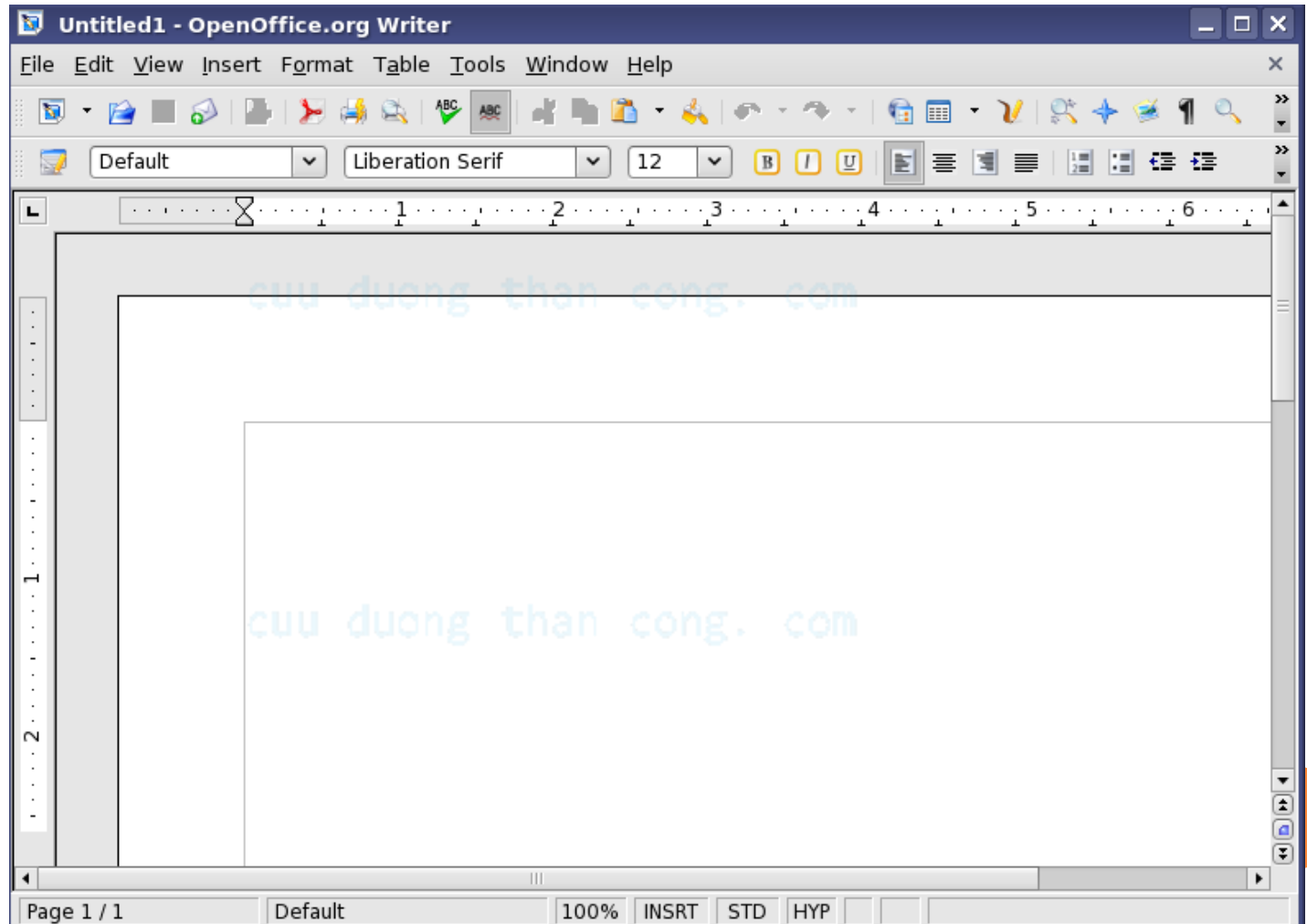
- Hỗ trợ các tính năng tương tự như bộ Microsoft Office. Với những phiên bản mới nhất, có thể đọc được file của MS Office 2007

cuu duong than cong. com

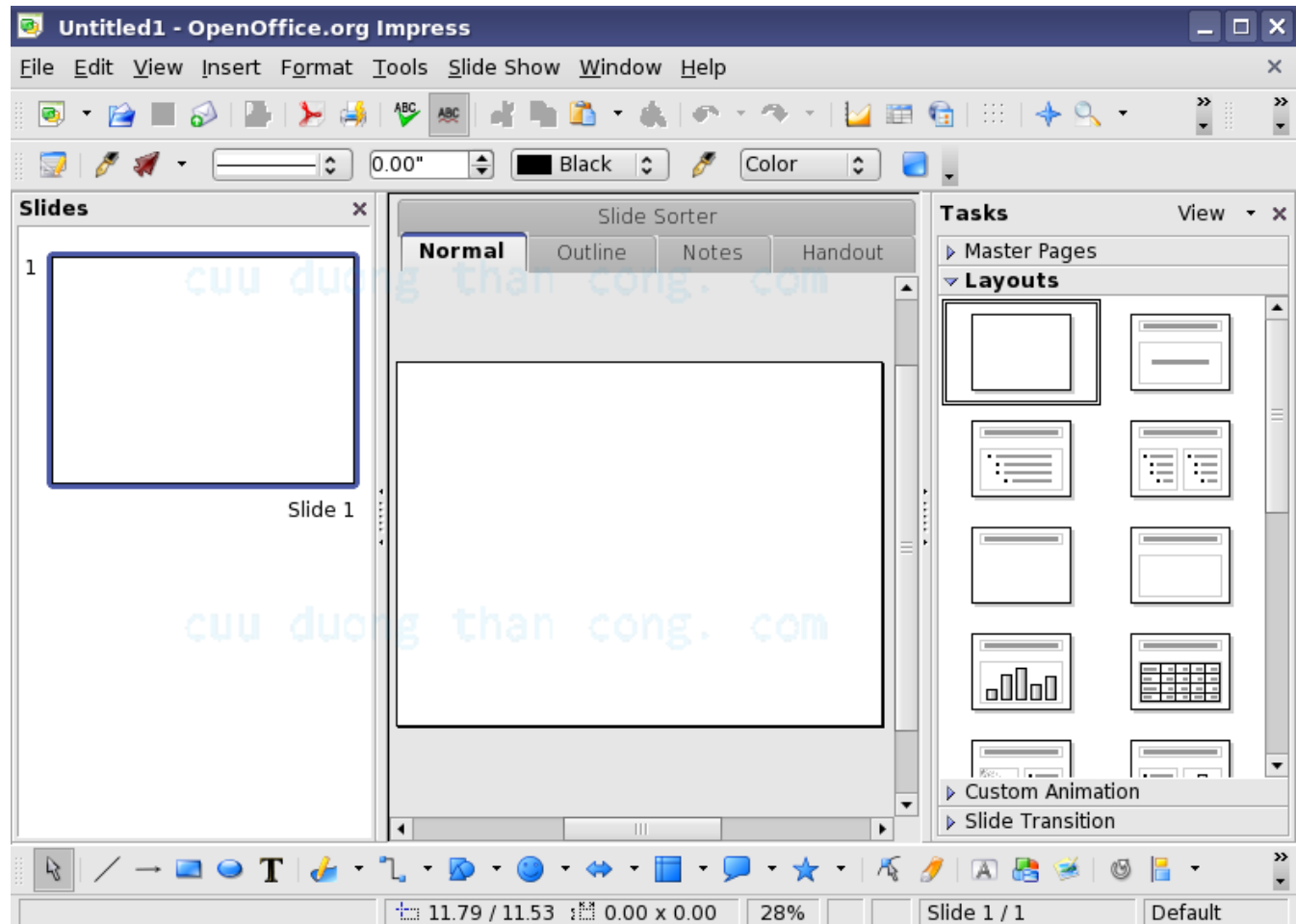
cuu duong than cong. com



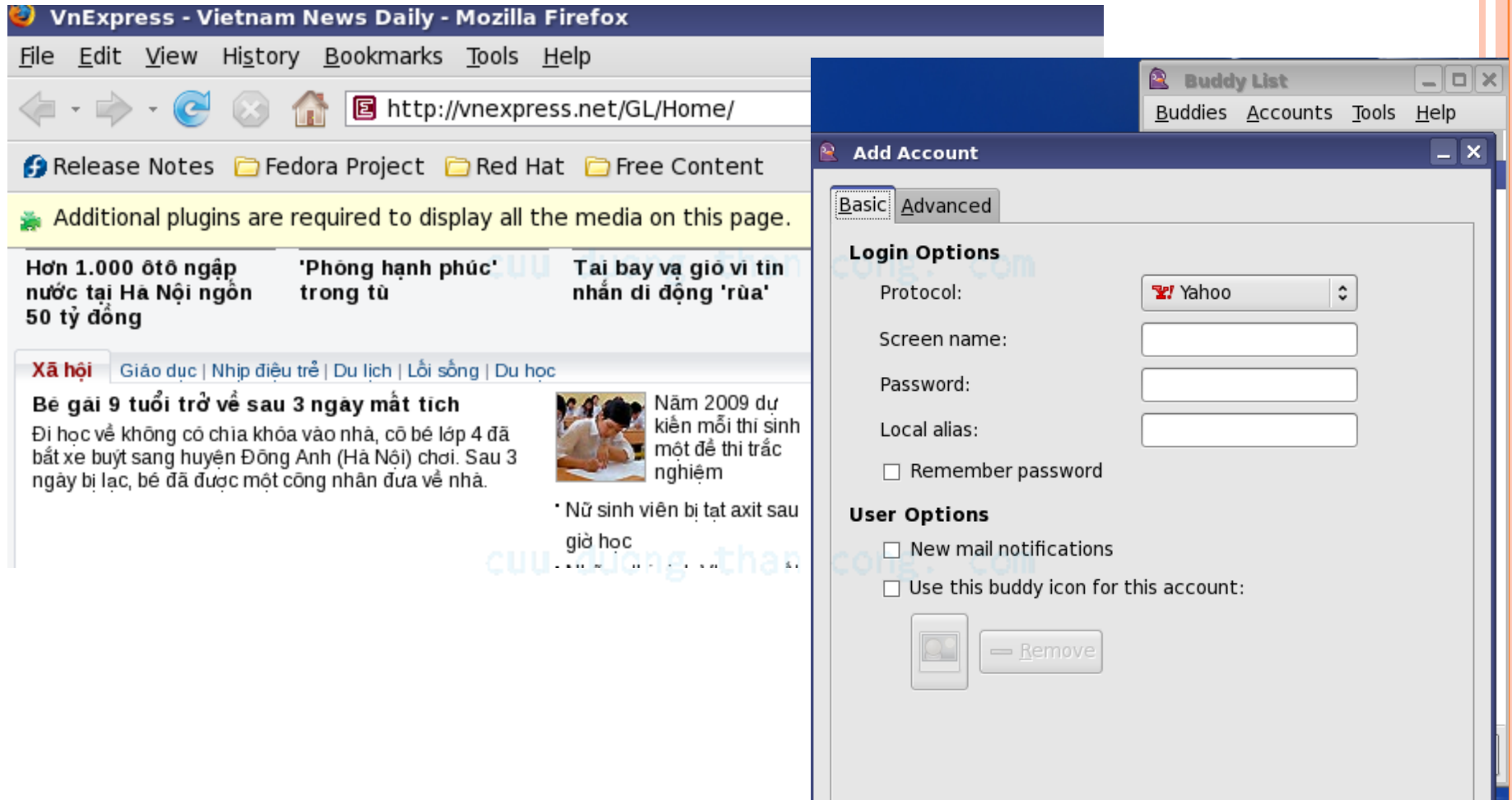
WRITER



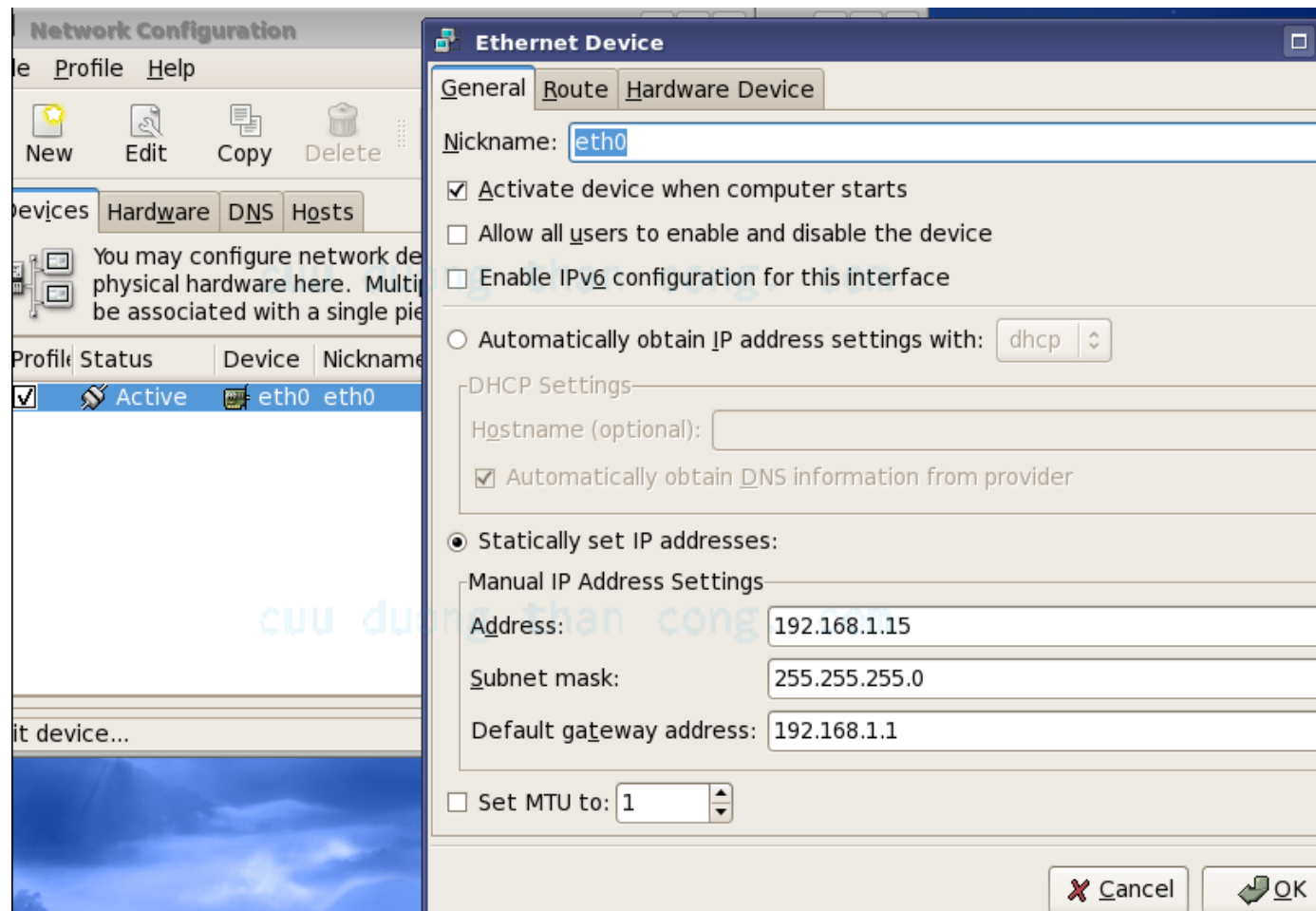
PRESENTATION



BROWSER _ INSTANT MESSAGING



CÁC CỬA SỔ SETTING



LẬP TRÌNH C++, JAVA

- Eclipse
- NetBeans
- KDevelop

cuu duong than cong. com

